

# Adeno-Associated Virus (AAV5) Separation with Sepax SEC columns

## HPLC Columns:

Sepax SRT SEC-300, 5 $\mu$ m, 300 Å, 7.8×300mm (P/N: [215300-7830](#))

Sepax SRT SEC-500, 5 $\mu$ m, 500 Å, 7.8×300mm (P/N: [215500-7830](#))

Sepax SRT SEC-1000, 5 $\mu$ m, 1000 Å, 7.8×300mm (P/N: [215950-7830](#))

## Mobile phase:

2x Dulbecco's Phosphate-Buffered Saline (DPBS) (total concentration 5.34 mM KCl, 2.94 mM KH<sub>2</sub>PO<sub>4</sub>, 273.8 mM NaCl, 16.2 mM Na<sub>2</sub>HPO<sub>4</sub>)

## Adeno-Associated Virus Sample:

AAV5 2.22×10<sup>13</sup>GC/mL in DPBS with 0.001% F68



# AAV5 Separation on SRT SEC-500

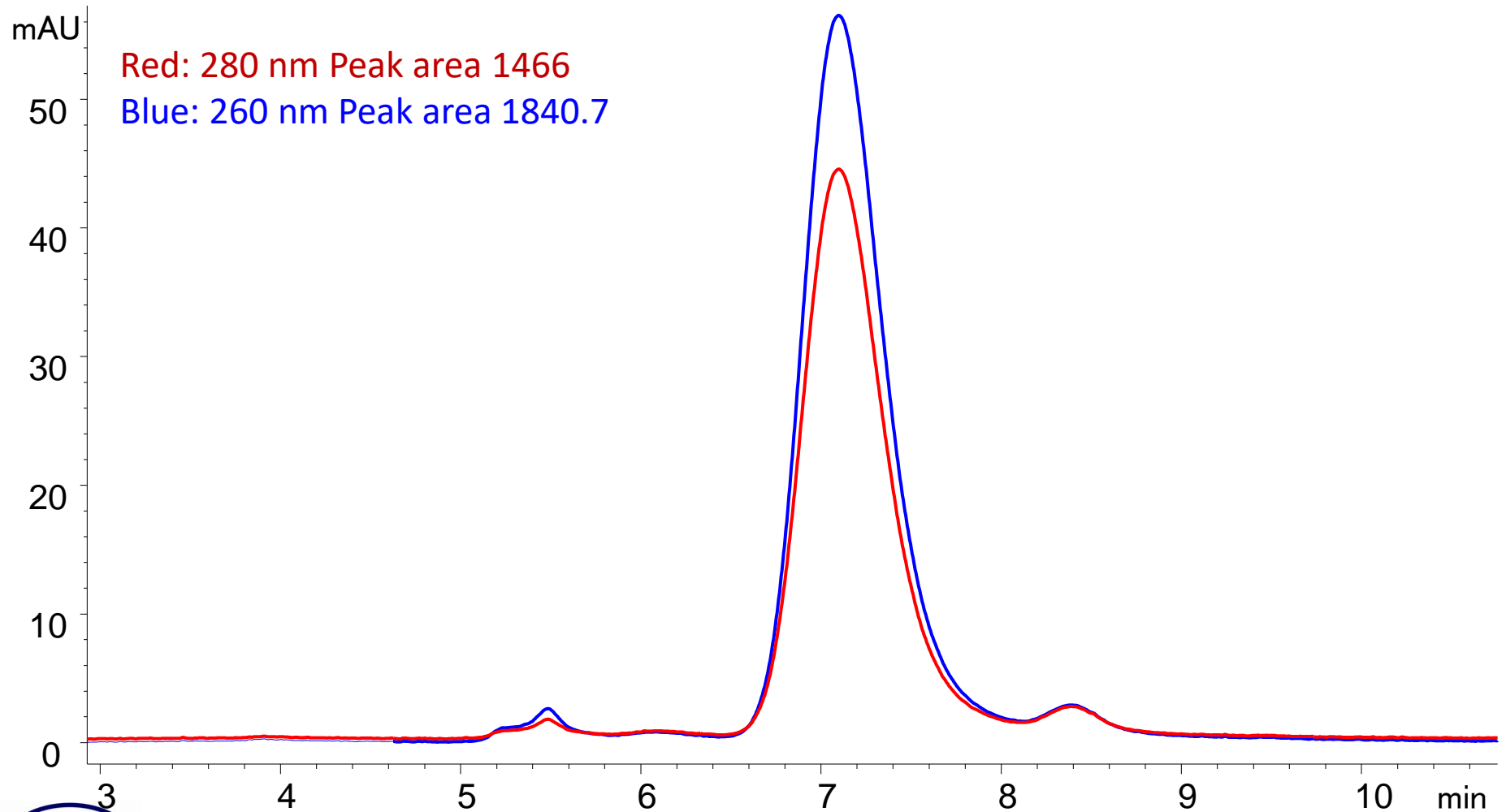
[SV1007](#)

Column: Sepax SRT SEC-500, 5 $\mu$ m, 500 Å, 7.8 $\times$ 300mm (P/N: [215500-7830](#))

Mobile phase: 2.0X DPBS pH 7.5

Flow rate: 1 mL/min, Detector: UV 280/260 nm, Column temperature: 25 °C ,

Samples: AAV5, Injection Volume: 50  $\mu$ L



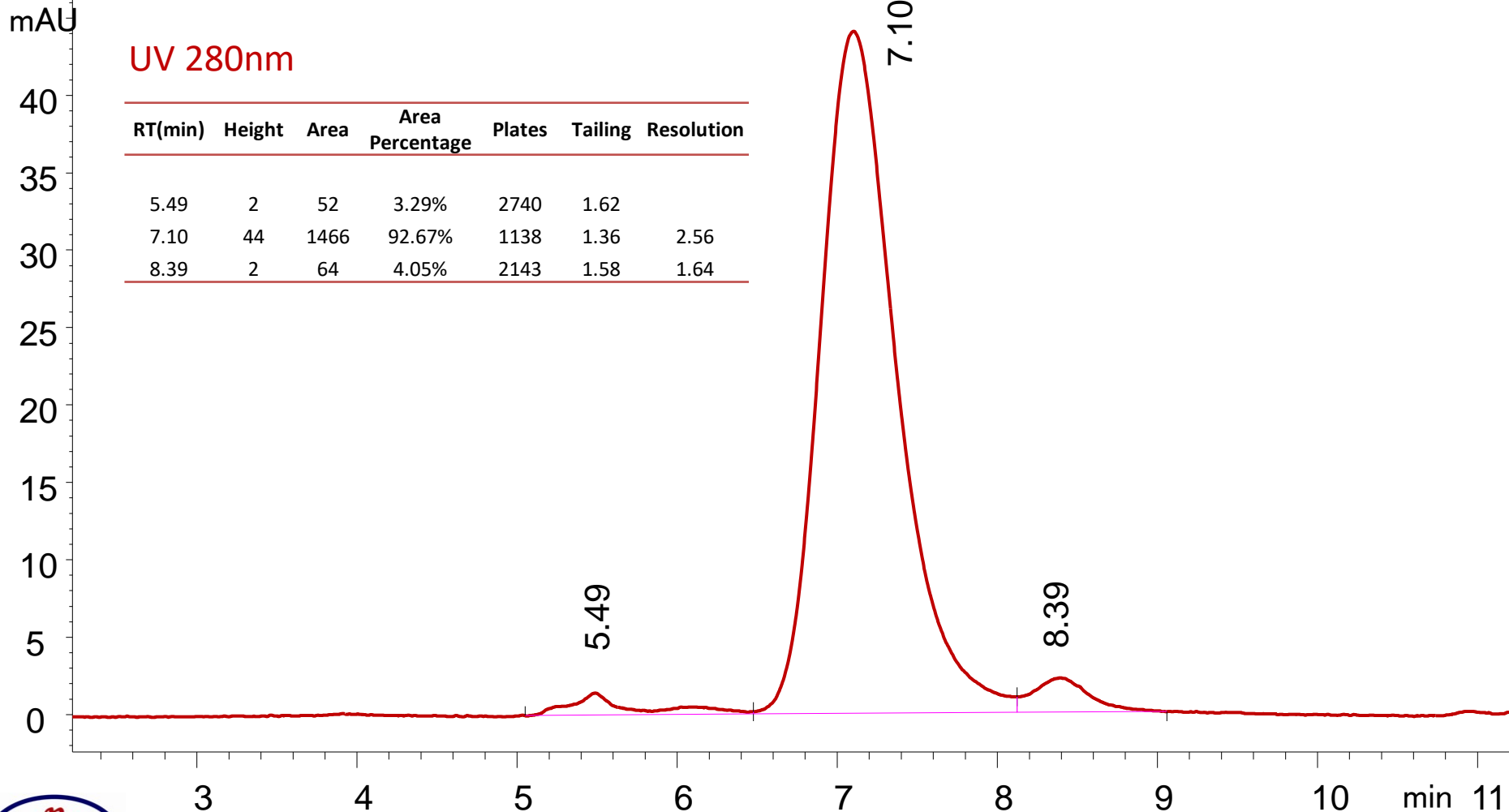
# AAV5 Separation on SRT SEC-500

Column: Sepax SRT SEC-500, 5 $\mu$ m, 500 Å, 7.8 $\times$ 300mm (P/N: [215500-7830](#))

Mobile phase: 2.0X DPBS pH 7.5

Flow rate: 1 mL/min, Detector: UV 280 nm, Column temperature: 25 °C ,

Samples: AAV5, Injection Volume: 50  $\mu$ L



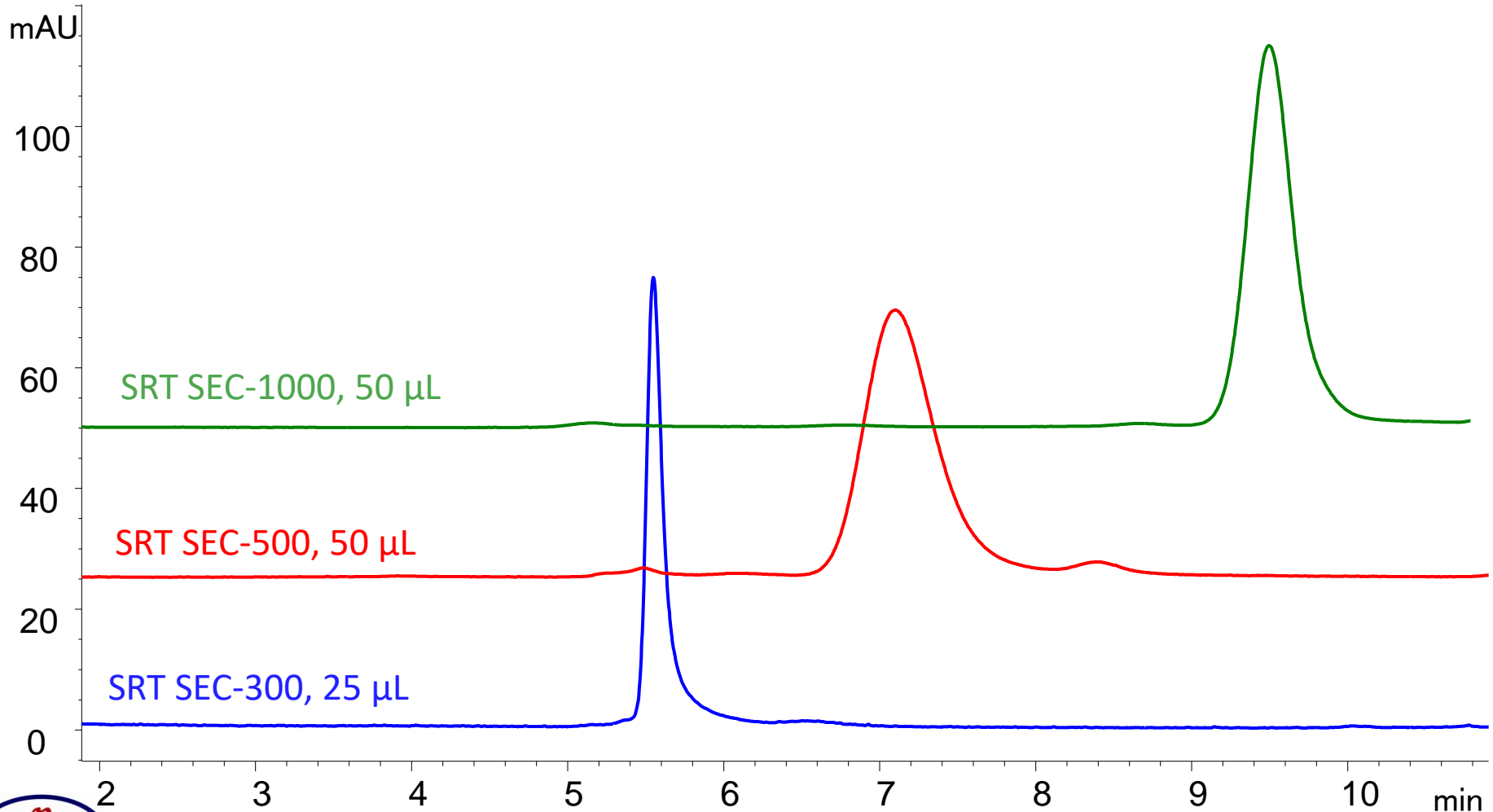
# AAV5 on SRT SEC – Pore Size Screening

Column: SRT SEC-300, 500, 1000 (5 $\mu$ m, 300, 500, 1000Å), 7.8  $\times$  300mm (P/N: [215300-7830](#), [215500-7830](#), [215950-7830](#))

Mobile phase: 2.0X DPBS pH 7.5

Flow rate: 1 mL/min, Detector: UV 280 nm, Column temperature: 25  $^{\circ}$ C ,

Samples: AAV5, Injection Volume: 50  $\mu$ L



As always, our technical support team is here to help!

Phone: **(877) SEPAX-US (press 3)**

email: **[TechSupport@sepax-tech.com](mailto:TechSupport@sepax-tech.com)**

