

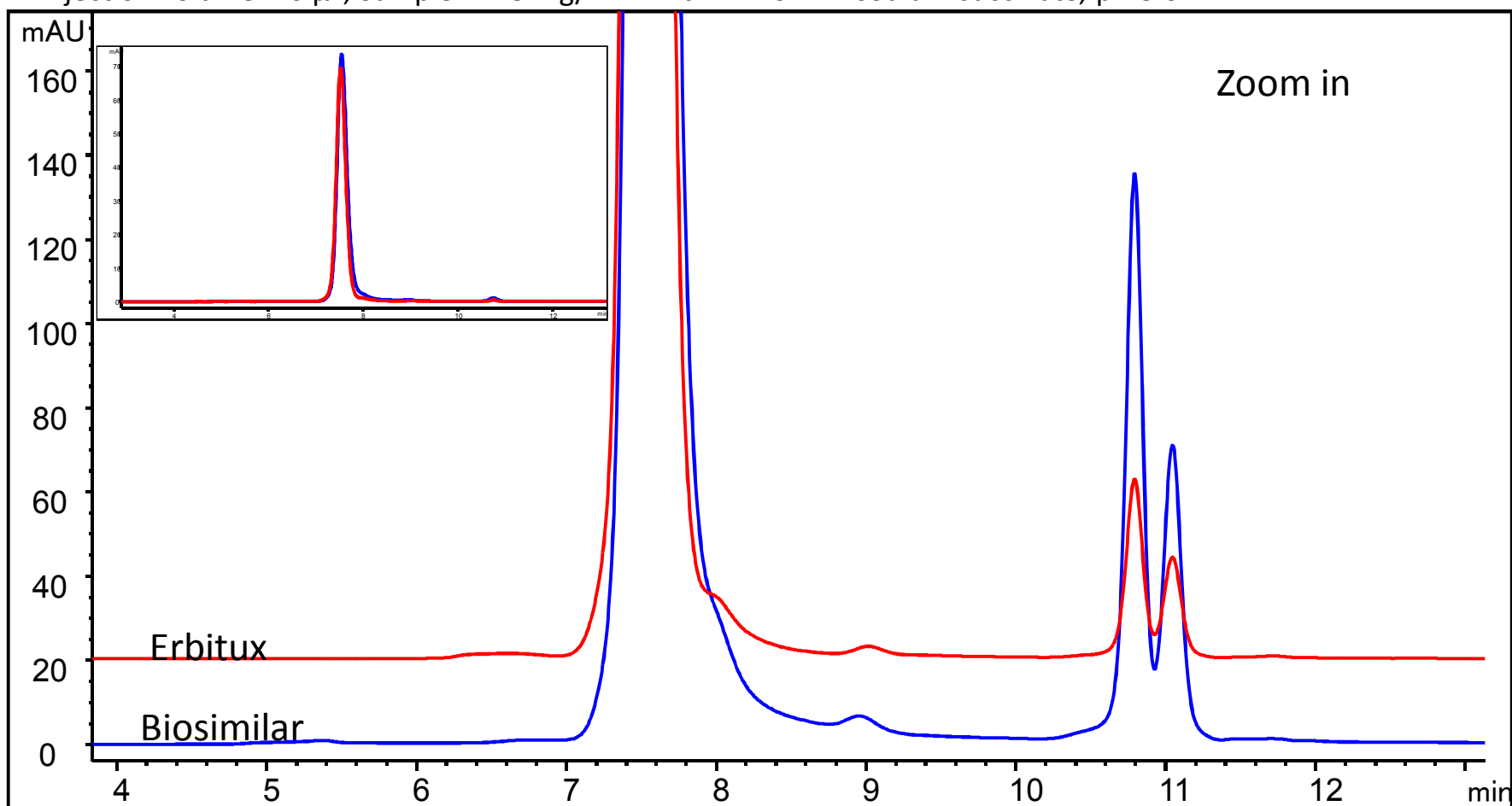
Erbitux and its Biosimilar Analysis on Zenix™ SEC-300

Column: Zenix™ SEC-300 (3 μm, 300 Å, 7.8 x 300 mm)

Mobile phase: 150 mM Sodium Phosphate; pH 7.0; Flow rate: 1.0 mL/min

Detector: UV 280 nm; Column temperature: 25 °C; Pressure: 74 bar

Injection volume: 10 μL; Sample: 1.23 mg/mL MAb F in 10 mM sodium succinate, pH 5.0



Erbitux and Biosimilar separation on Antibodix™ WCX NP5

Column: Antibodix™ WCX NP5 (5 μ m, 4.6 x 250 mm)

Mobile phase A: 10 mM Phosphate buffer, pH 7.5, B: A + 0.5 M NaCl, Flow rate: 0.8 mL/min;

Detector: UV 214 nm; Column temperature: 30 °C, pressure: 162 bar,

Sample: 2 μ L 5 mg/mL Erbitux and 5 μ L 2 mg/mL biosimilar

