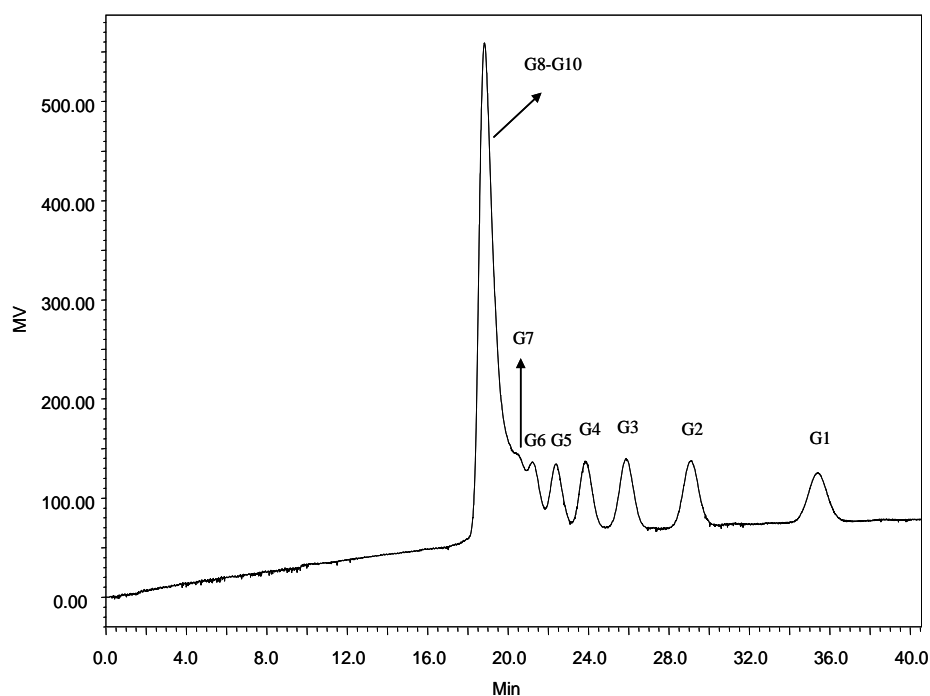




## Analysis of Glucidex on Carbomix<sup>®</sup>-Ca (5 $\mu$ m, 8%, 4.6x300 mm)



Column: Carbomix<sup>®</sup> Ca-NP5 (5  $\mu$ m, 8% crosslinkage, 4.6x300 mm)  
Mobile Phase: Water, pH 6.0  
Flow Rate: 0.2 mL/min  
Temperature: 85 °C  
Detection: Differential Refractometer  
Injection Volume: 20  $\mu$ L  
Samples: Glucidex (100 mg/mL), 10 components from G1 (monomer) to G10 (10th mer)  
(Courtesy of Miyako Kawakatsu, M&S Instruments, Inc.)

Keywords: Carbohydrate, Carbomix, calcium form, sugar, maltodextrins, Glucidex