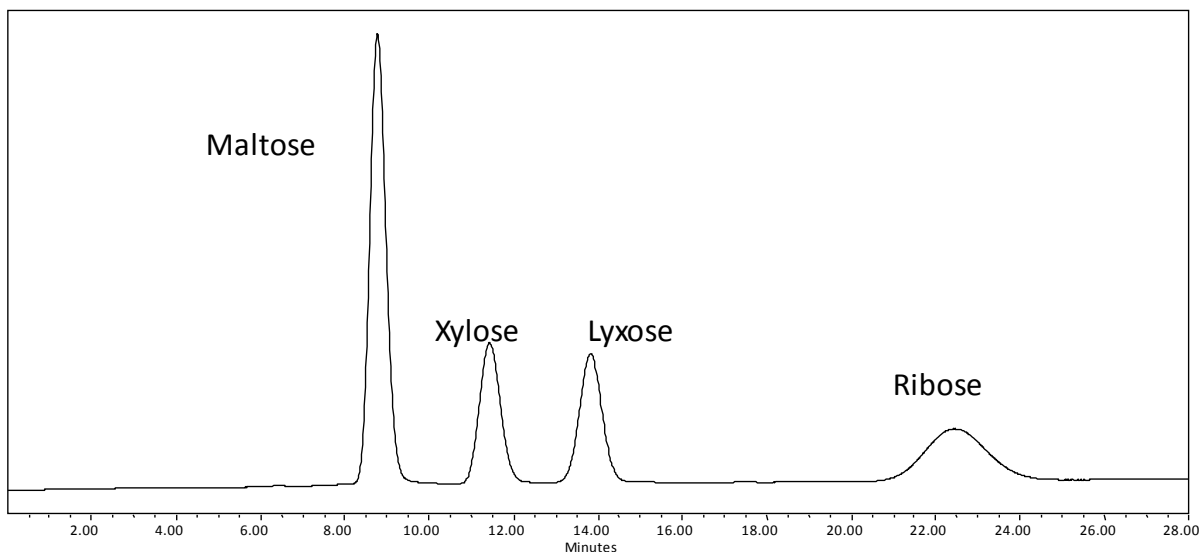
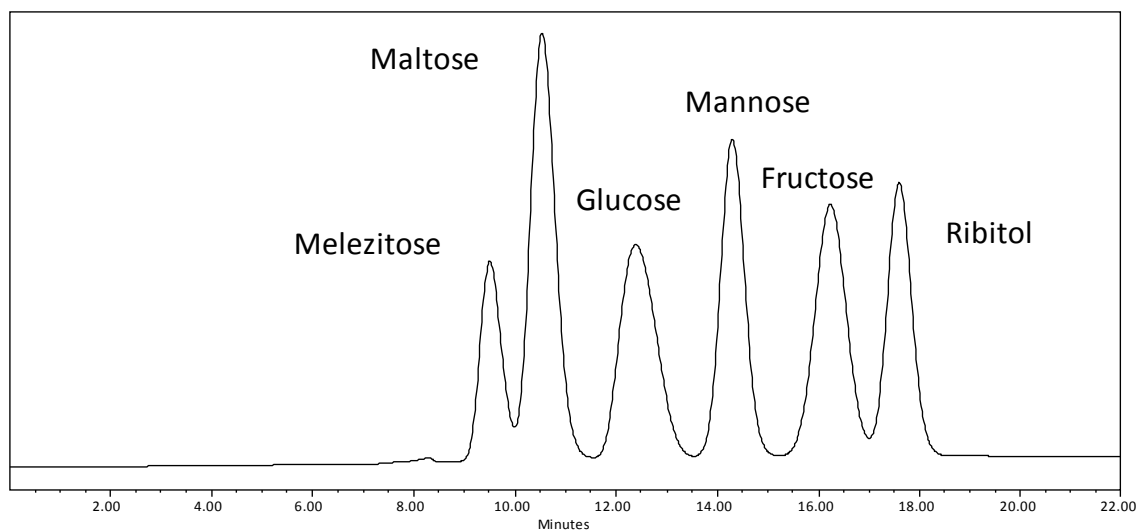
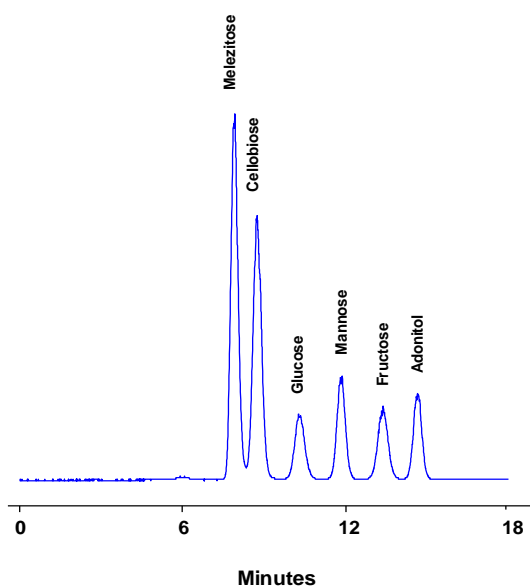


**Analysis of Carbohydrates on Carboximix[®] Ca-NP10 (10 μ m, 8%, 7.8x300 mm)**

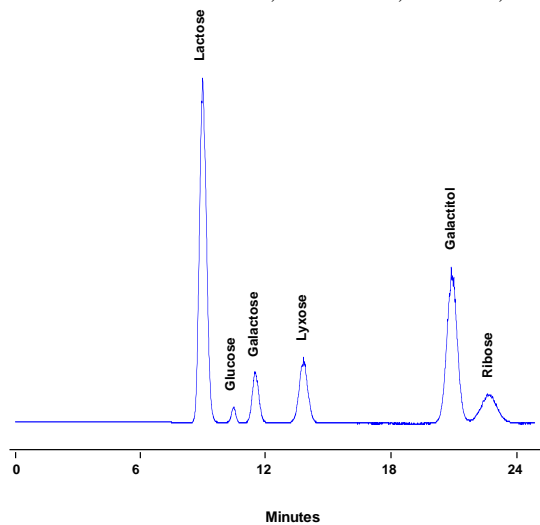
Column: Carboximix[®] Ca-NP10 (10 μ m, 8%, 7.8x300 mm)
Mobile Phase: water
Temperature: 80 °C
Flow Rate: 0.6 mL/min
Detection: RI
Samples: maltose, xylose, lyxose, ribose



Column: Carboximix[®] Ca-NP10 (10 μ m, 8 %, 7.8x300 mm)
Mobile phase: Water
Temperature: 80 °C
Flow rate: 0.5 mL/min
Detection: RI
Injection Volume: 10 μ L
Samples: Melezitose, Maltose, Glucose, Mannose, Fructose, Ribitol



Column: Carbomix[®] Ca-NP10 (10 μ m, 8%, 7.8x300 mm)
Mobile phase: Water
Flow rate: 0.6 mL/min
Temperature: 85 $^{\circ}$ C
Detection: ELSD
Injection volume: 0.5 μ L
Samples: Melezitose, Cellobiose, Glucose, Mannose, Fructose, Adonitol



Column: Carbomix[®] Ca-NP10 (10 μ m, 8%, 7.8x300 mm)
Mobile Phase: water
Flow Rate: 0.6 mL/min
Temperature: 85 $^{\circ}$ C
Detection: ELSD
Injection Volume: 2 μ L
Samples: Lactose, Glucose, Galactose, Lyxose, Galactitol, Ribose

Keywords: Carbohydrate, Carbomix, calcium form, xylose, ribose, melezitose, maltose, glucose, mannose, fructose, adonitol, cellobiose, lactose, galactose, lyxose, galactitol, ribitol