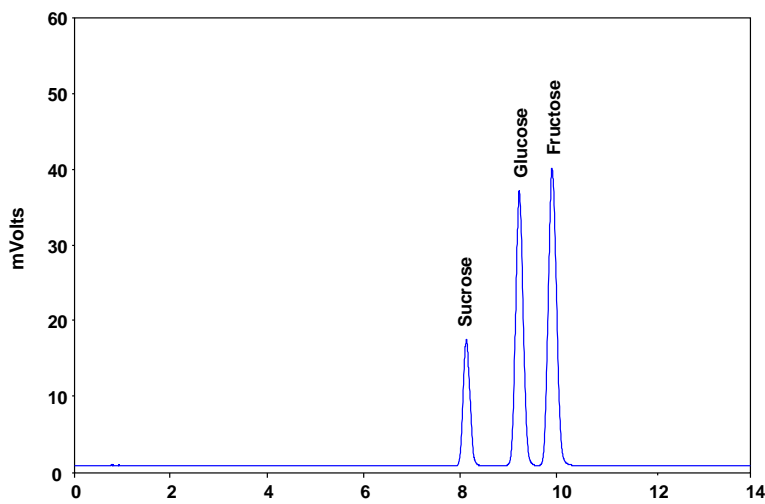
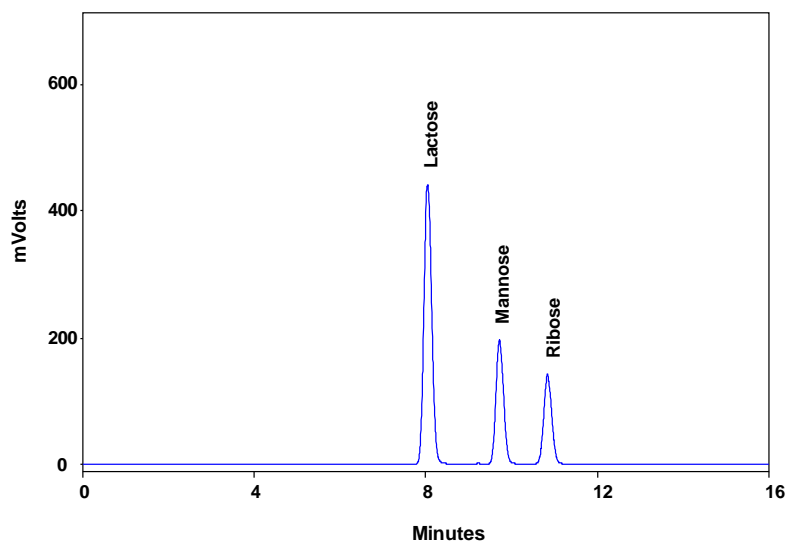


**Analysis of sugar mixture on Carbomix[®] H-NP10 (10 μ m, 8%, 7.8x300 mm)**

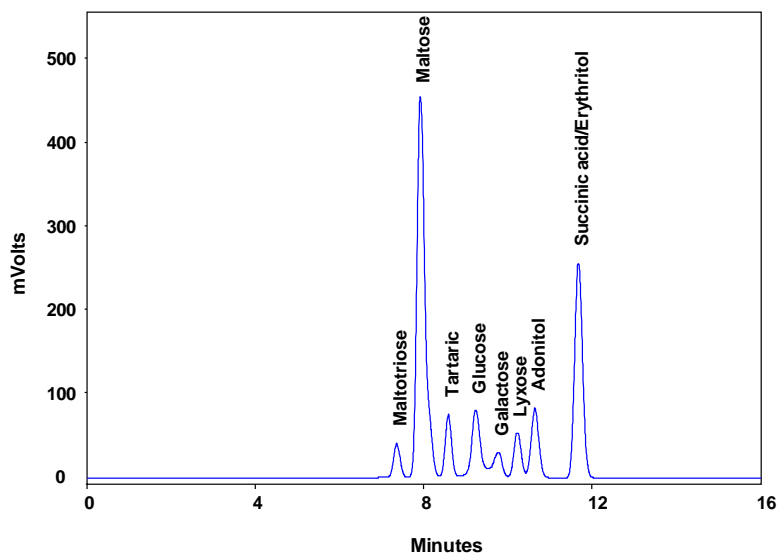
Minutes

Column: Carbomix[®] H-NP10 (10 μ m, 8%, 7.8x300 mm)
Mobile Phase: TFA solution, pH 2.5
Flow Rate: 0.6 mL/min
Temperature: 55 $^{\circ}$ C
Detection: ELSD
Injection Volume: 10 μ L
Samples: sucrose, glucose, fructose

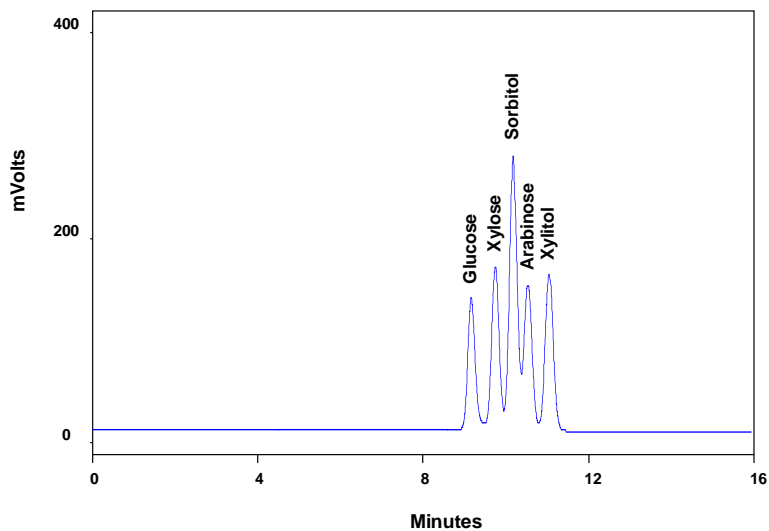


Minutes

Column: Carbomix[®] H-NP10 (10 μ m, 8%, 7.8x300 mm)
Mobile Phase: TFA solution, pH 2.5
Flow Rate: 0.6 mL/min
Temperature: 55 $^{\circ}$ C
Detection: ELSD
Injection Volume: 5 μ L
Samples: lactose, mannose, ribose



Column: Carbomix[®] H-NP10 (10 μ m, 8%, 7.8x300 mm)
 Mobile Phase: TFA solution, pH 2.5
 Flow Rate: 0.6 mL/min
 Temperature: 55 $^{\circ}$ C
 Detection: ELSD
 Injection Volume: 10 μ L
 Samples: maltotriose, maltose, tartaric, glucose, galactose, lyxose, adonitol, succinic acid, erythritol



Column: Carbomix[®] H-NP10 (10 μ m, 8%, 7.8*300 mm)
 Mobile Phase: TFA solution, pH 2.5
 Flow Rate: 0.6 mL/min
 Temperature: 55 $^{\circ}$ C
 Detection: ELSD
 Injection Volume: 10 μ L
 Samples: glucose, xylose, sorbitol, arabinose, xylitol

Keywords: Carbohydrate, Carbomix, hydrogen form, ELSD, sugar mixture