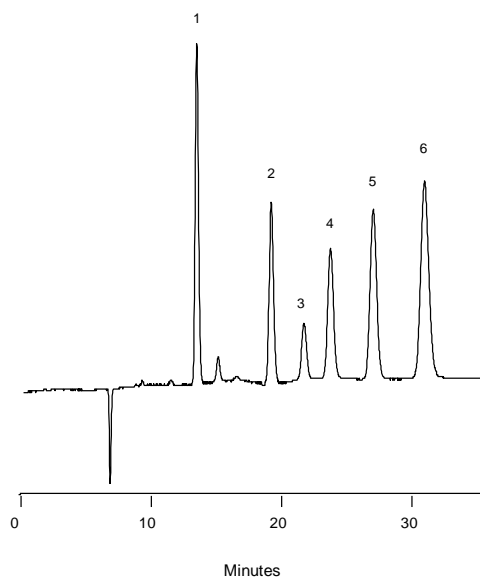


**Analysis of Alcohols on Carbomix[®] H-NP10 (10 μ m, 8%, 7.8x300 mm)**

Column: Carbomix[®] H-NP10 (10 μ m, 8% crosslinking, 7.8x300 mm)
Mobile Phase: 2.5 mM H₂SO₄
Flow Rate: 0.6 mL/min
Temperature: 55 °C
Detection: RI
Injection Volume: 25 μ L
Samples: 1. Glycerol; 2. Methanol; 3. Ethanol; 4. Isopropanol; 5. 1-Propanol; 6. Sec-Butanol

Keywords: Carbohydrate, Carbomix, hydrogen form, sugar alcohol