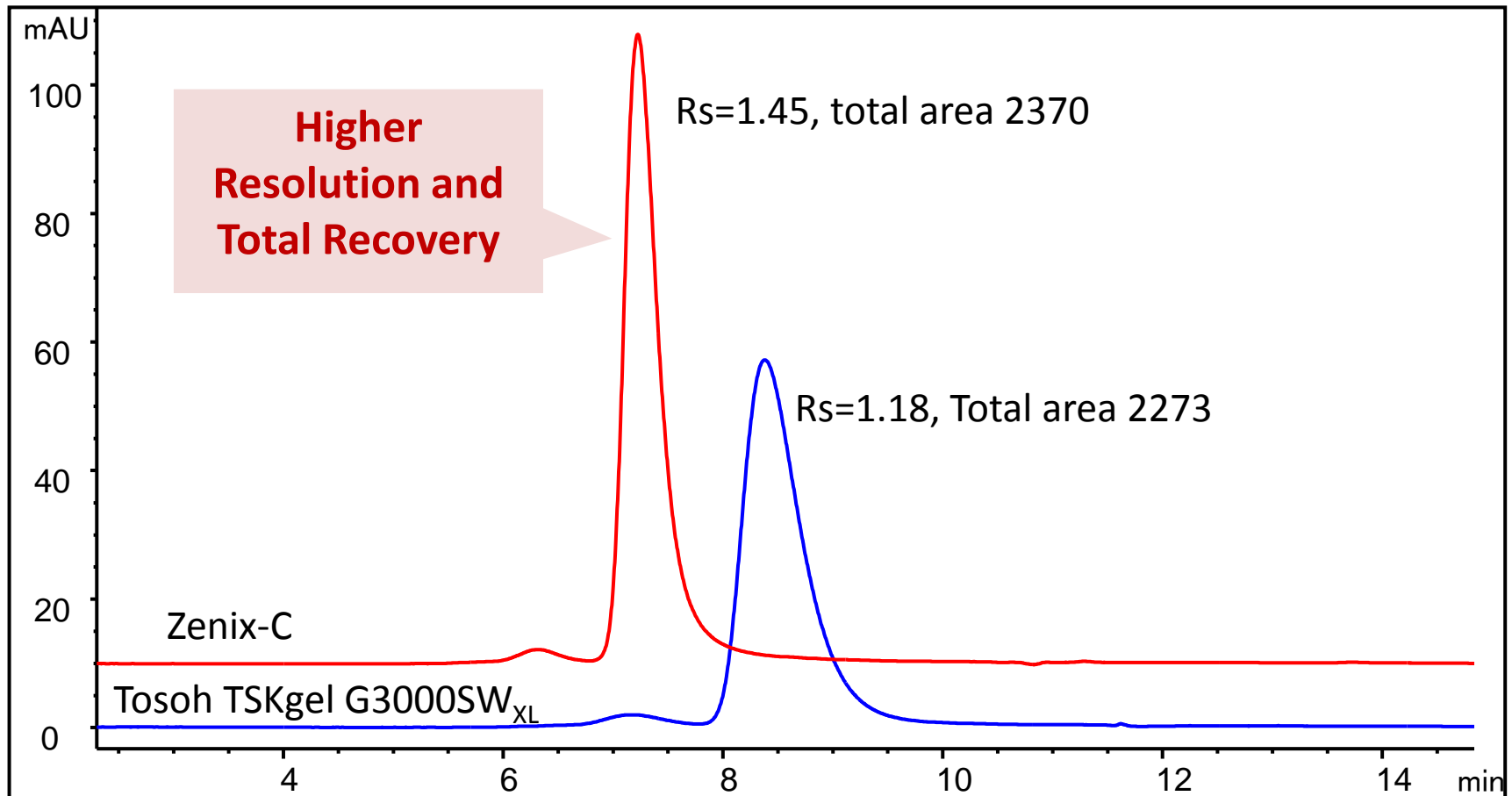


Herceptin-Lysine Drug Conjugate Analysis

Zenix-C SEC-300 vs. Tosoh TSKgel G3000SW_{XL}

EM1004

Column: Zenix[®] - C SEC-300 (3 μm , 300 \AA , 7.8 x 300 mm) , Tosoh TSKgel G3000SW_{XL} (5 μm , 250 \AA , 7.8 x 300 mm)
Mobile phase: 150 mM phosphate buffer, pH 7.0; Flow rate: 1 mL/min; Detector: UV 280 nm; Column temperature: 25 $^{\circ}\text{C}$
Injection volume: 10 μL ; Samples: Herceptin-lysine drug conjugate 2.05 mg/mL



Disclaimer: TSKgel and Tosoh Bioscience are registered trademarks of Tosoh Corporation; Comparative separations may not be representative of all applications.



www.sepax-tech.com

Better Surface Chemistry for Better Separation © Sepax Technologies, Inc.