

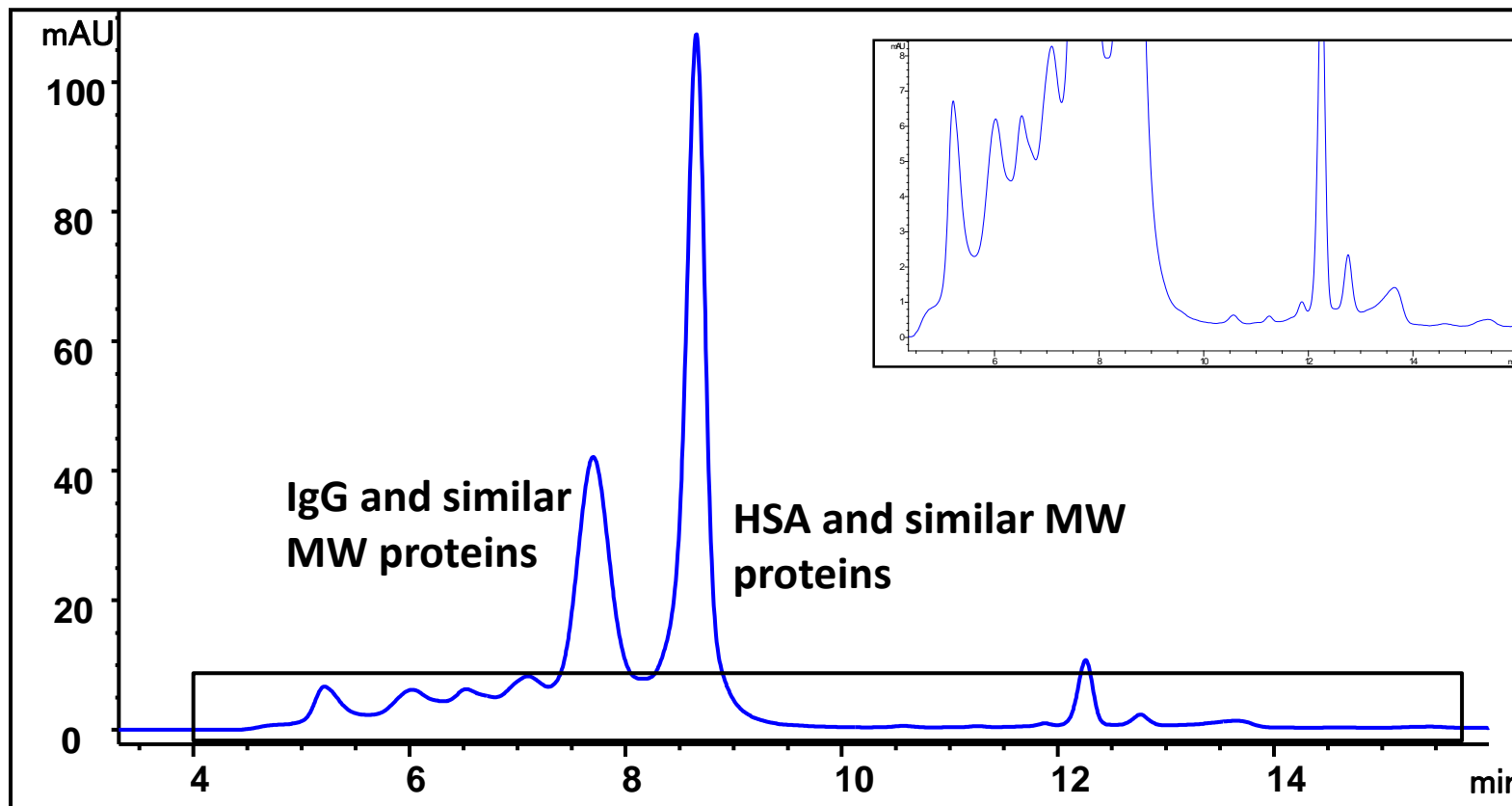
Human Serum on Zenix-C 300

EP1006

Column: Zenix-C 300, 3 μm , 7.8 x 300 mm, S/N 35771

Mobile phase: 150 mM phosphate buffer, pH 7.0,

Flow rate: 1 mL/min, Detection: UV 280 nm, Injection Volume: 1 μL Sigma human serum S7023



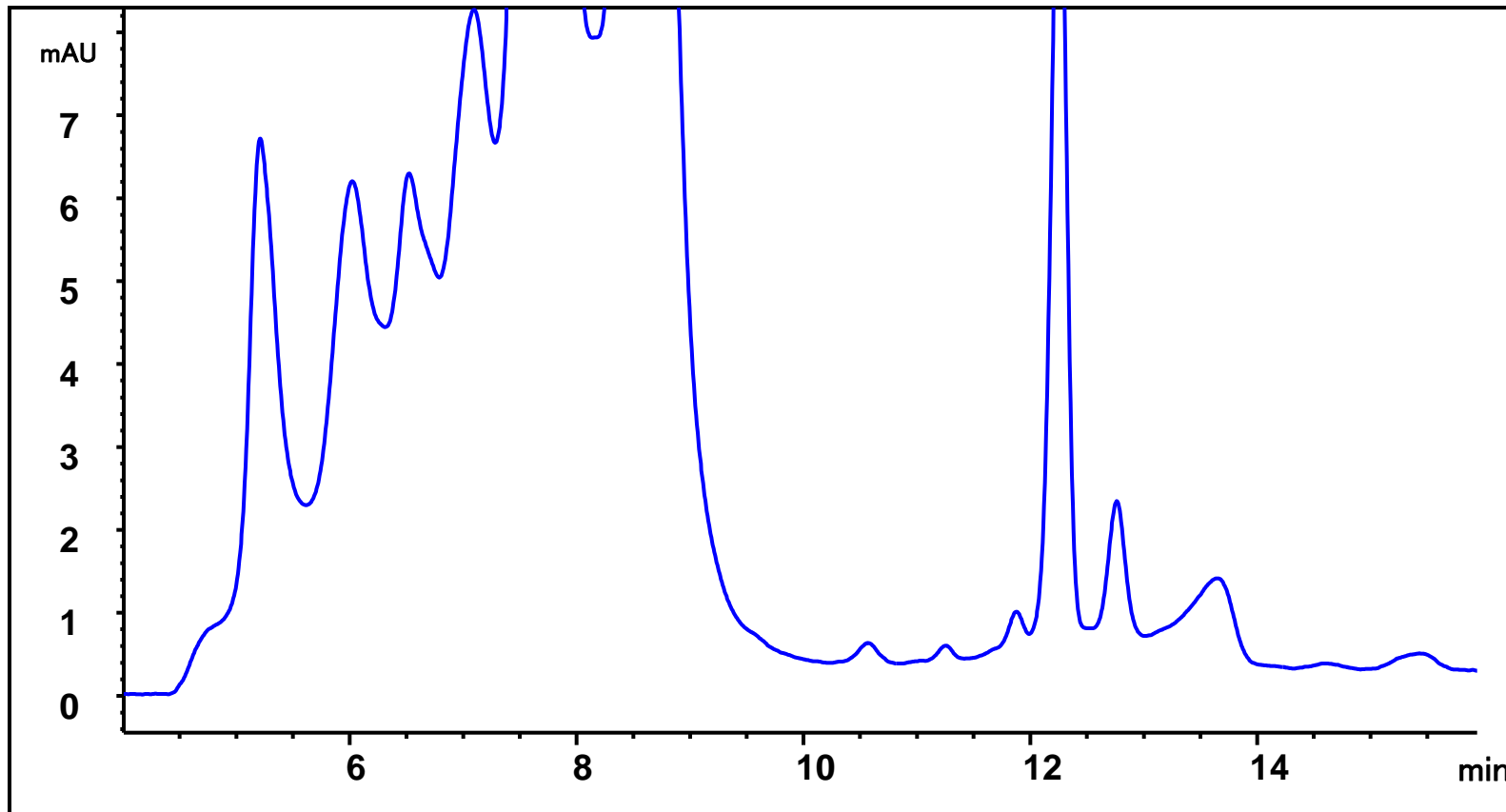
Zoom in area next page



www.sepax-tech.com

Better Surface Chemistry for Better Separation © Sepax Technologies, Inc.

Zenix-C Zoom in Area



Human Serum on Proteomix SAX

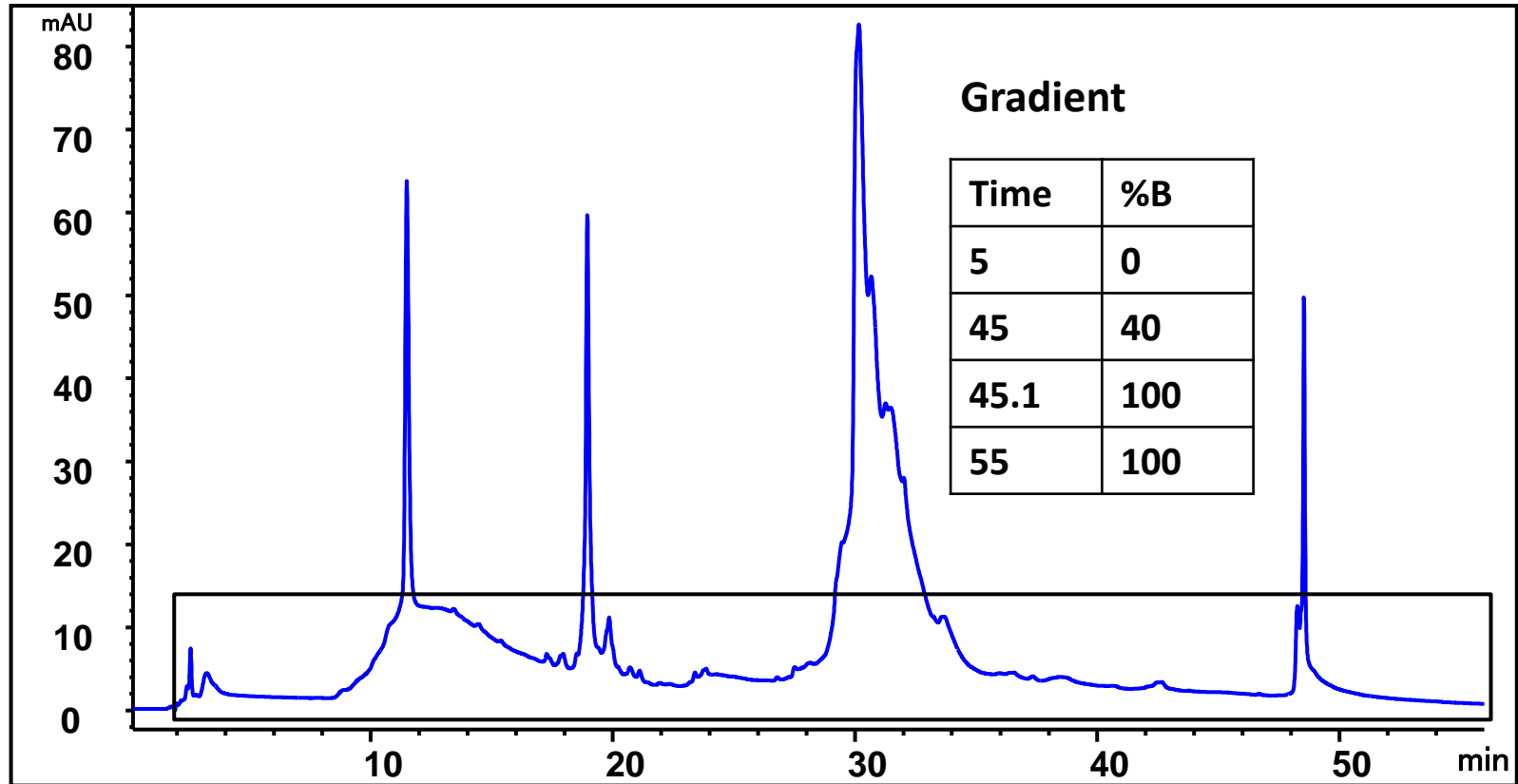
EP1006

Column: Proteomix SAX, 3 μm , 7.8 x 100 mm

Mobile phase: A: 20 mM Tris, pH 8.0, B: A+1M NaCl,

Flow rate: 0.8 mL/min, Detection: UV 280 nm,

Injection Volume: 5 μL Sigma human serum S7023 diluted 10 fold with buffer A



↓
Zoom in area next page



SAX Zoom in Area

