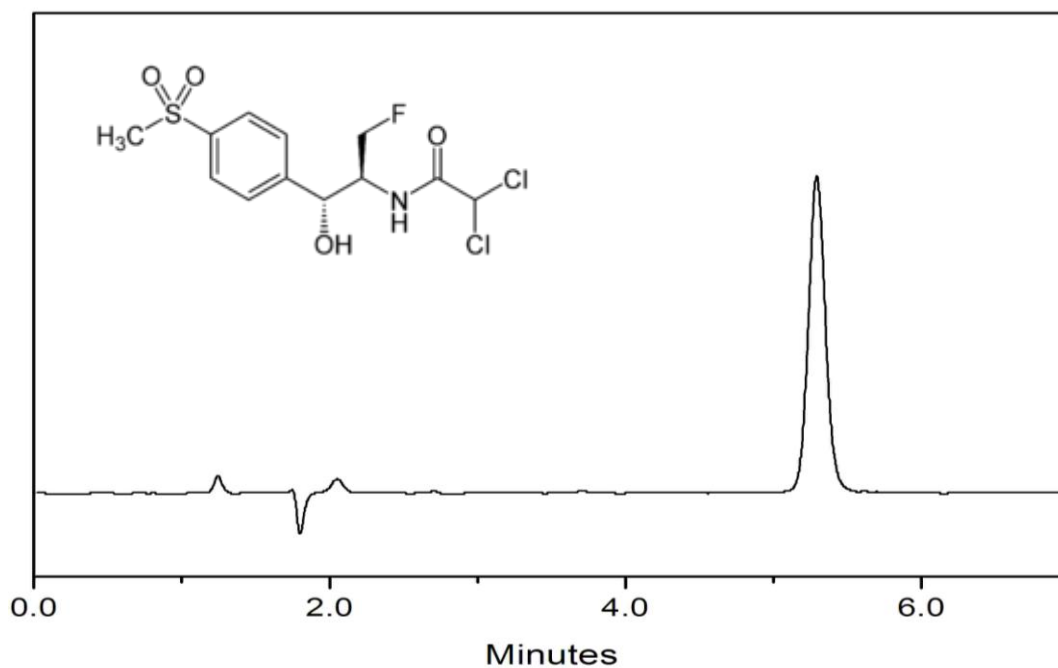


### Analysis of Florfenicol on HP-C18



Column: HP-C18, 5  $\mu\text{m}$ , 120  $\text{\AA}$ , 4.6 $\times$ 150 mm  
Mobile phase: ACN: H<sub>2</sub>O:HAc = 500: 985: 15 (v/v)  
Flow rate: 1.0 mL/min  
Temperature: Ambient  
Detection: 224 nm  
Injection Volume: 10  $\mu\text{L}$   
Sample: Florfenicol

Keywords: HP-C18, reverse phase, florfenicol, veterinary drug, chloramphenicol antibiotic, agricultural antibiotic, pharmaceuticals