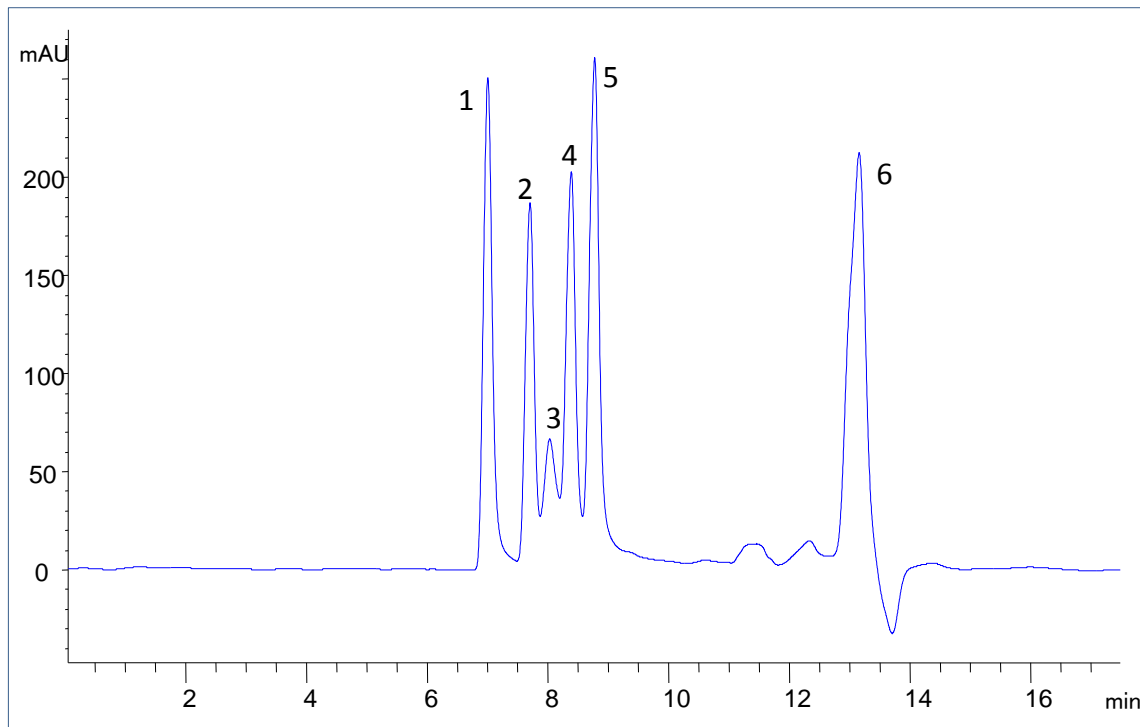




Peptide Separations on Zenix™-80 (7830) from 13.7 kD to 120 Da



Column: Zenix™ SEC-80 (3 μm , 80 \AA , 7.8x300 mm)
Mobile Phase: ACN:H₂O:TFA=75:25:0.1(v/v)
Flow Rate: 0.8 mL/min
Temperature: Ambient
Detection: UV 214 nm
Injection Volume: 5 μL
Sample: 1. Ribonuclease A (13.7 kD); 2. Insulin from Porcine pancreas (5,778 Da);
3. Glucagon (3,843); 4. Angiotensin I (1,297 Da); 5. Bradykinin (1060 Da);
6. Uracil (120 Da)

Keywords: Size exclusion, Zenix, peptide, 80 \AA pore size, insulin, bradykinin, glucagon, angiotensin I, ribonuclease A, Uracil, small peptide