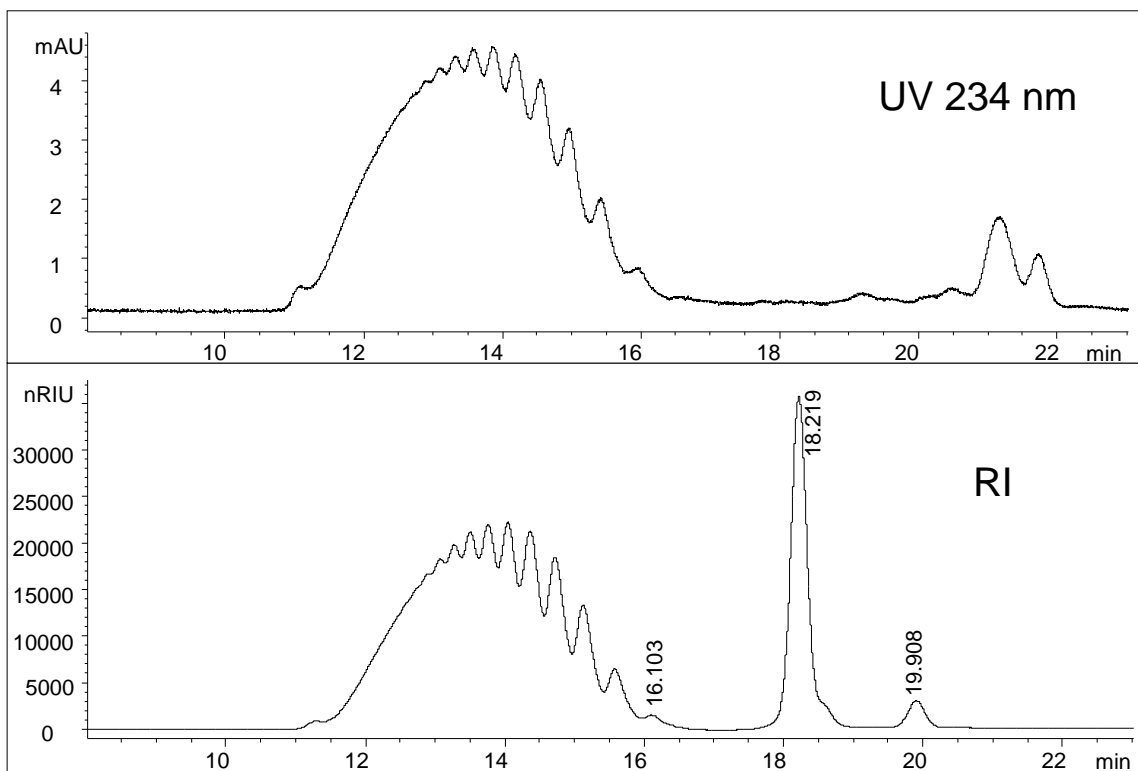


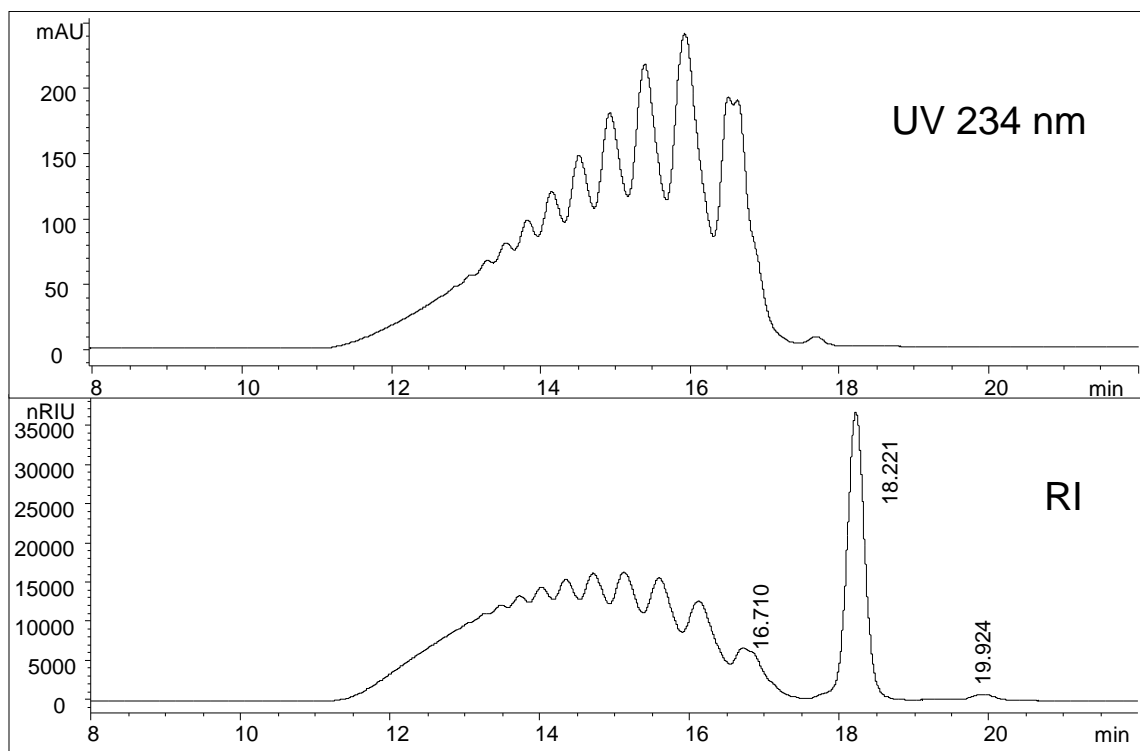


LMW Heparin-Dalteparin and Enoxaparin Analysis on Zenix™ -100 (7830)



Compound Name	RT [min]	Height	Area	Plates	Tailing	Resolution
	16.10	623	7837	29775	1.05	
	18.22	35805	638994	29324	1.31	5.29
	19.91	3035	58248	28028	1.01	3.74

Columns: Zenix™-100 (3 μm, 100 Å, 7.8x300 mm)
Flow Rate: 0.5 mL/min
Mobile phase: 2.84% Na₂SO₄, pH 5.0
Temperature: 35 °C
Detection: UV 234 nm and RI
Injection volume: 25 μL
Samples: 10 mg/mL Dalteparin in water, pH 6.0, MW 3,000 – 8,000 Da



Compound Name	RT [min]	Height	Area	Plates	Tailing	Resolution
	16.71	2952	66122	11388	1.26	
	18.22	36610	609436	29594	1.02	2.87
	19.92	742	15100	21006	0.92	3.49

Columns: Zenix™-100 (3 μm, 100 Å, 7.8x300 mm)
Flow Rate: 0.5 mL/min
Mobile phase: 2.84% Na₂SO₄, pH 5.0
Temperature: 35 °C
Detection: UV 234 nm and RI
Injection volume: 25 μL
Samples: 10 mg/mL Enoxaparin in mobile phase, MW 3,000 – 8,000 Da

Keywords: Size exclusion, Zenix, Zenix-100, low molecular weight heparin, high resolution, Enoxaparin, Dalteparin, Pharmaceuticals