



## DNA Extraction from Rice Leaf

National Institute of Agrobiological Sciences - Japan

### CONTEXT

The research plan is to isolate the genes of functional proteins and clarify their functions by introducing them into plants.

The lab is studying the gene transfection into a plant seed by electroporation. Our team checks how much volume of DNA is introduced into a seed by a standard molecular biology process.

### MATERIAL

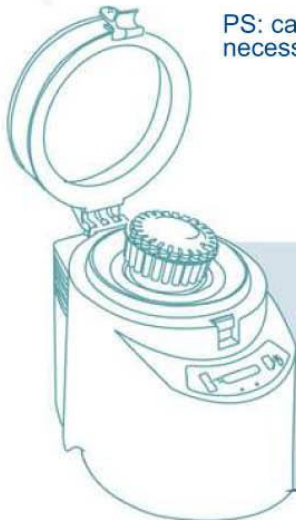
- Precellys®24
- Precellys® kit SK38 (Mixed beads)
- Sample : 0,08g of rice leaf cut into pieces
- Buffer : empty

### PROTOCOL

Precellys®24 parameters: 5000rpm, 1x15 sec.  
Before and after the homogenization, the tube is put in liquid nitrogen (LN).

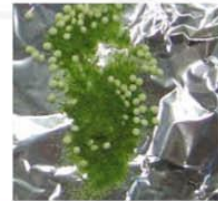
DNA extraction buffer must be poured into the tube while the sample is frozen.  
The beads are separated using stainless sieve.

PS: careful of handling LN. Use necessary protective gears.



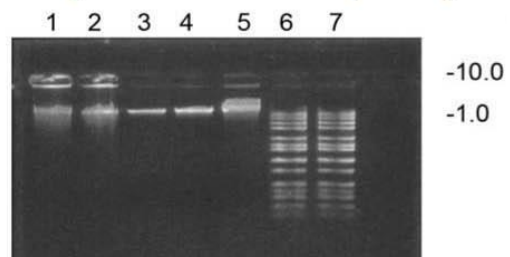
### RESULTS

DNA was extracted with *Nucleon™ PhytoPure™ Genomic DNA Extraction Kits* from GE Healthcare.



Fresh leaves, before LN      Frozen leaves after grinding

The migration gives the following results :  
(Lane No.1 and No.2 are replications)



1. DNA from rice leaf
2. DNA from rice leaf
3.  $\lambda$ DNA 0.05 $\mu$ g
4.  $\lambda$ DNA 0.1 $\mu$ g
5.  $\lambda$ DNA 0.5 $\mu$ g
6. Marker
7. Marker

Since the concentration of the  $\lambda$ DNA is known, it is used to semi-quantify the amount of extracted DNA by visual observation

### CONCLUSION

The former method was to grind the leaves manually using mortar and pestle. It was laborious and time consuming. Precellys®24 gives us a new approach in our sample preparation, combining efficiency and high-throughput.

For more details, please contact [precellys@bertin.fr](mailto:precellys@bertin.fr)



イワマ機器株式会社

<http://www.technosaurus.co.jp>

- 東京  
〒162-0805 東京都新宿区矢来町 113 番地 TEL(03)3235-0661(代) FAX(03)3235-0669
- 大阪  
〒532-0005 大阪市淀川区三国本町2丁目12番4号 TEL(06)6396-0501(代) FAX(06)6395-2588
- 福岡  
〒812-0054 福岡市東区馬出 1 丁目 2 番 23 号 TEL(092)631-1012(代) FAX(092)641-1285

※会社名および商品名は、各会社の商標または登録商標です。  
※本カタログに記載の規格・仕様・外観は予告なく変更する場合がありますので御了承下さい。